

WASHERCAP™

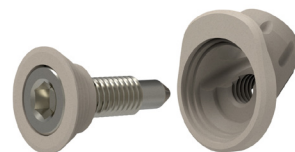
ACL FIXATION SYSTEM

Reliable and **accurate** soft tissue fixation
independent of the bone quality

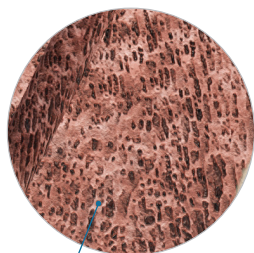


WASHERCAP™

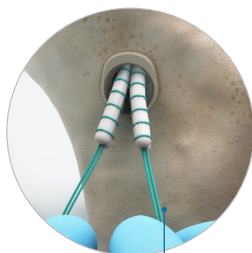
Thanks to the **WasherCap™** design, a complete trapping of the soft tissue is achieved inside the device, without depending on the bone quality of the patient and respecting the biomechanics of the graft.



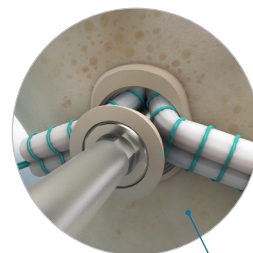
Advantages



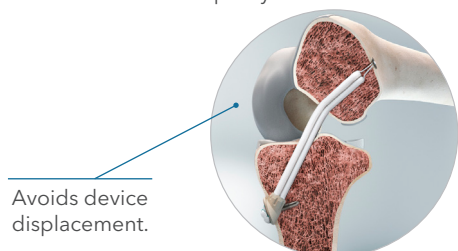
Not dependent of the cancellous bone quality.



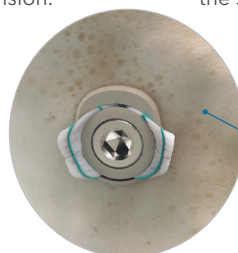
Easy to control and adjust graft tension.



Prevents threading against the soft tissue graft.



Avoids device displacement.

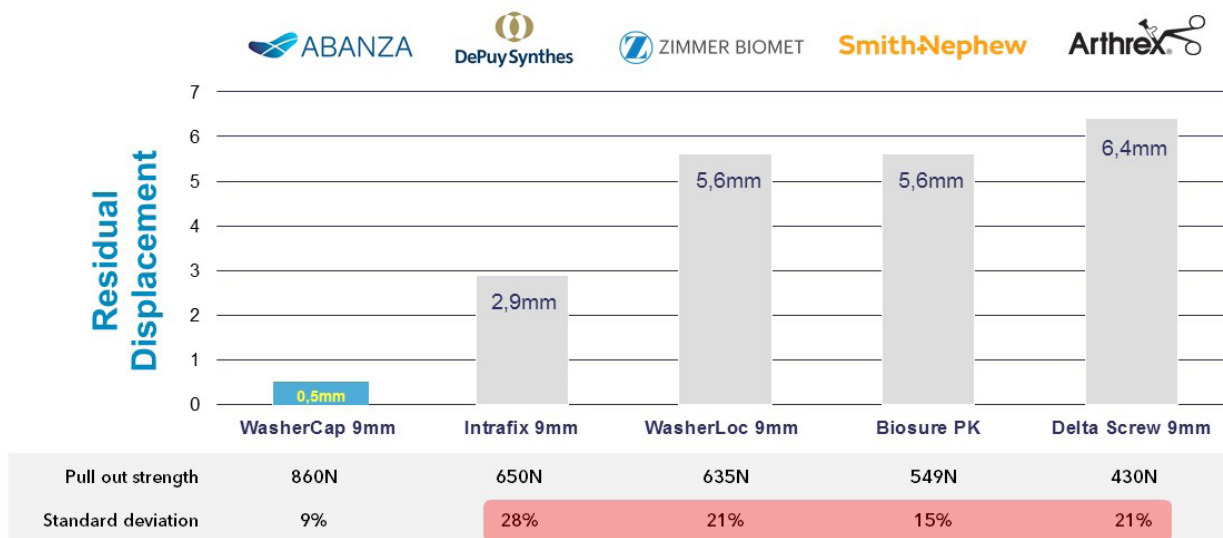


Provides tunnel plugging.

Superior Results

Comparison between WasherCap™ 9mm and current 9mm fixations

Biomechanical tests demonstrated that ACL reconstructions using the **WasherCap™** device provided a **superior fixation strength** on the tibial side compared to standard fixation devices, with a **deviation of 7% thanks to its internal fixation mode**. The **minimal displacement** (0,6 mm) of the device under cyclic loads provides greater safety during the patient rehabilitation period.



[1] Brian P. Scannell, MD, Bryan J. Loeffler, MD, Michael Hoening, MD, Richard D. Peindl, PhD, Donald F. D'Alessandro, MD, Patrick M. Connor, MD, and James E. Felischli, MD. "Biomechanical Comparison of Hamstring Tendon Fixation Devices for Anterior Cruciate Ligament Reconstruction: Part 2. Four Tibial Devices". The American Journal of Orthopedics, February 2015.
 [2] Laura Greaves, MASC, Jennifer Al Beik, DVM, Wendy Shaw. "Bioshure Sync tibial fixation device: A biomechanical study of fixation strength" Smith&Nephew 2010.
 [3] ABANZA internal Testing. Further information available upon request.

Surgical Technique

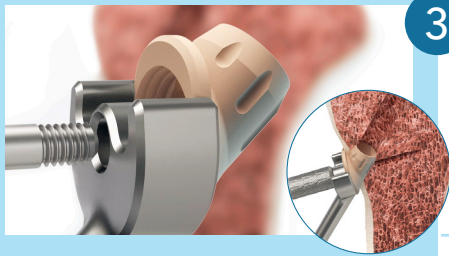
Preparation



- 1 Once the tibial tunnel is prepared, place the positioner over the tibial tunnel. Ensure the lateral stoppers reach the cortex with the help of a mallet. Introduce the guide into the positioner and advance the Kirschner wire through the guide until the laser etched line. Remove both the guide and the positioner. Leave only the kirschner wire in place.



- 2 Next, advance the countersink over the Kirschner wire to shape the cortex where the WasherCap™ will be implanted. When the stop of the countersink reaches the cortex, remove the countersink and the Kirschner wire.



- 3 Next, place and fix the cap over the WasherCap™ inserter with the coupling screw. Place the cap into the entry of the tibial tunnel and insert it until it is flush with the cortex with the help of a mallet. Unscrew the coupling screw and remove the inserter from the cap.



- 4 Retrieve the passing suture through the tibial tunnel and the Cap. Advance the button and graft through the Cap and the tibial tunnel until the button is positioned against the femoral cortical surface. Then set the knee at the desired flexion angle.



- 5 Tighten the graft strands at the 4 and 8 o'clock positions; and place the screw with the washer into the threaded hole of the cap. Advance the screw until it is flush with the cap.
Note: the washer prevents the graft from twisting with the screw. The graft is compressed inside the cap without having to depend on the quality of the cancellous bone.



- 6 Proceed with arthroscopic and dynamic evaluation through range of motion. Remove the distal remnant of the graft. Follow standard practice and close the incision.

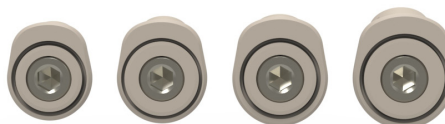
Fixation

Ordering Information

WasherCap™ is available in a range of sizes from 7mm to 10mm.

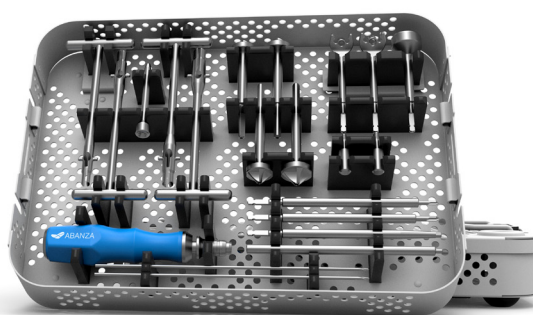


Reference #	Description
ABWC0721	WasherCap™ 7mm
ABWC0821	WasherCap™ 8mm
ABWC0921	WasherCap™ 9mm
ABWC1021	WasherCap™ 10mm



WasherCap™ Instrument Set offers a safe, simple and easily reproducible technique.

Reference #	Description
ABWCIN00	Instrument Set



The information on products and/or procedures contained herein is of a general nature and does not represent medical advice. A surgeon should always rely on his or her own clinical and professional judgement when deciding whether to use a particular product to treat a patient. ABANZA recommends that surgeons be trained in the use of any product before using it in surgery, and individual examination of each patient is necessary. The instructions for use and labelling accompanying the product should always be consulted before using any ABANZA product. Not all ABANZA products may be available in all markets because availability is based on medical and/or regulatory practices in each market. Contact your ABANZA representative for availability in your area.



The new age of medical devices at your hands

Telephone: (877) 7ABANZA
Email: customerservice@abanzamed.com

 ABANZA
BROCHURE-001-R03