

WASHERCAP™ MINI

FIXATION SYSTEM

MENISCAL ROOT

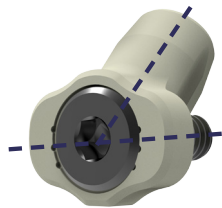
Optimize your healing potential with
maximized soft tissue repair strength



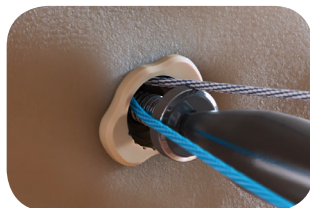
WASHERCAP™ MINI

The WasherCap™ ACL Fixation System is expanding to include the WasherCap™ Mini. This addition expands the possibilities and indications, allowing for knotless, adjustable-tension fixation of standard sutures and tapes. The independent suture-to-device fixation does not rely on cancellous bone quality for construct strength and results in superior rigid fixation in both displacement and pull-out strength.

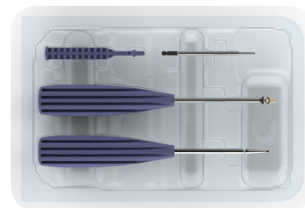
Advantages



Bi-Planar Fixation provides two points of fixation in a single device.



Knotless, adjustable-tension suture fixation allows for adjustment of tension at any time during the procedure without damage to the sutures.



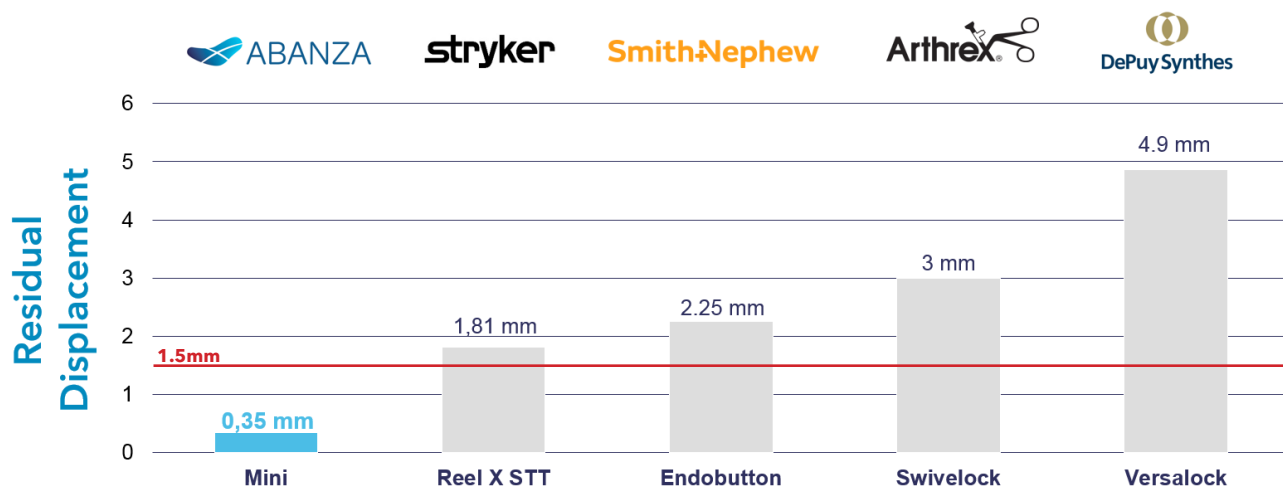
Single use, disposable instrumentation is ready to use off-the-shelf, saving time and costs in reprocessing.



Wide Range of indications including Meniscal Root repair, meniscal transplant, All-Inside ACL, ACL/PCL Repair, TFCC repair and Rotator Cuff Repair.

Superior Results

Biomechanical tests demonstrated that Meniscal Repair using the WasherCap™ Mini provided minimal displacement under cyclic loads and superior fixation strength compared to standard fixation devices. The low standard deviation of the results is thanks to the internal suture fixation methodology.



Pull out strength	397N	138N	169N	190N	204N
Standard deviation	7%	30%	28%	28%	30%

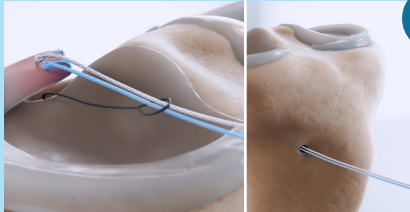
[1] Prado-Novoa, et al. Initial Biomechanical Properties of Transtibial Meniscal Root Repair are Improved By Using a Knotless Anchor as a Post-Insertion Tensioning Device. Sci Rep. 2020 Feb.
 [2] Nakama, Gilbert, et al. (2019). Different Suture Materials for Arthroscopic Transtibial Pull-out Repair of Medial Meniscal Posterior Root Tears. The Orthopaedic Journal of Sports Medicine. 7. 1-8.
 [3] Krych AJ, et al. A simple cinch is superior to a locking loop for meniscus root repair: a human biomechanical comparison of suture constructs in a transtibial pull-out model. Knee Surg Sports Traumatol Arthrosc. 2018.
 [4] Eren MB, et al. Knotless anchors offer better prevention of meniscal excursion than knotted anchors: An experimental study of the bovine knee. Acta Orthop Traumatol Turc. 2020 Jan.
 [5] ABANZA Internal Testing. Further information available upon request.

Surgical Technique

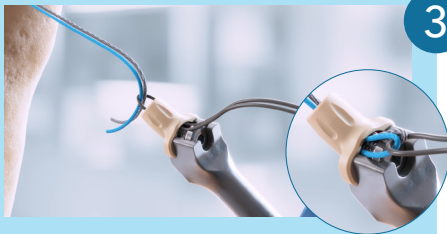
Preparation



- 1 Once the bone tunnel is created and the sutures/tapes are passed through the soft tissue, tendon or ligament, prepare the bone for the entrance of the screw by placing the drilling guide tool into the tunnel. Ensure the lateral stoppers reach the cortex and advance the drill bit through the guide until it reaches the depth stop. Finally, remove the drill bit first and then the guide.



- 2 Then use a passing wire to shuttle the sutures/tapes down the tunnel.



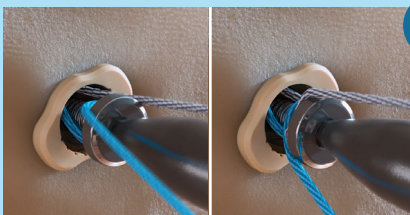
- 3 To preserve the tension applied to the tissue, secure the sutures/tapes using the WasherCap Mini. Pass the sutures/tapes through the nitinol loop. Pull the nitinol loop through the cap to thread the sutures/tapes through the cap.



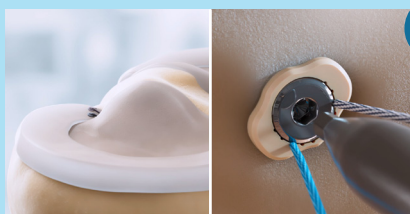
- 4 With the sutures/tapes through the cap, insert the cap into the entry of the bone tunnel using gentle mallet strikes until it is flush with the cortex aligning it with the direction of the tunnel



- 5 Once the cap is inserted, rotate the screw counterclockwise by one full revolution to loosen it and remove the inserter



- 6 To maintain tension, wrap one end of one of the sutures/tapes around the screw head and tighten it. Repeat the process with the other suture/tape in the other direction around the screw.



- 7 With the suture/tape strands tightened on the underside of the device, advance the screw until it is flush with the cap. The sutures/tapes are now secured inside the WasherCap Mini, preventing fixation displacement, and working reliably regardless of cancellous bone quality.

Fixation

Ordering Information

WasherCap™ is available in a range of sizes from 3.5mm and 4.5mm.



Reference #	Description
ABMN3500	WasherCap™ Mini 3.5mm
ABMN4500	WasherCap™ Mini 4.5mm



The information on products and/or procedures contained herein is of a general nature and does not represent medical advice. A surgeon should always rely on his or her own clinical and professional judgement when deciding whether to use a particular product to treat a patient. ABANZA recommends that surgeons be trained in the use of any product before using it in surgery, and individual examination of each patient is necessary. The instructions for use and labelling accompanying the product should always be consulted before using any ABANZA product. Not all ABANZA products may be available in all markets because availability is based on medical and/or regulatory practices in each market. Contact your ABANZA representative for availability in your area.



A new era in soft tissue fixation